



This project has received funding from the European Union's Horizon 2020 research and innovation programme under grant agreement N° 824173.

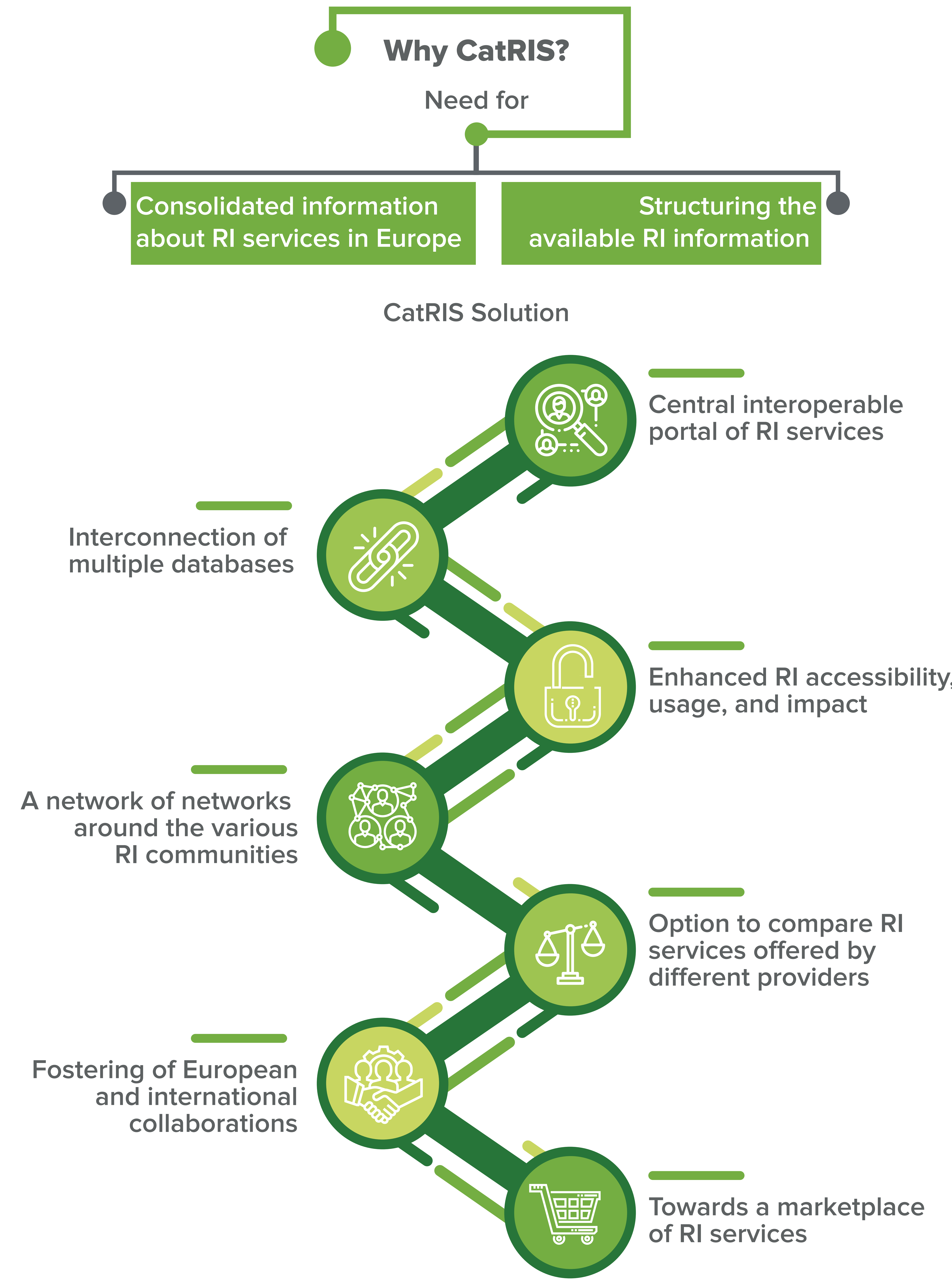


CatRIS

Catalogue of Research Infrastructure Services



CatRIS is an **open, trusted and user-friendly portal to a harmonised and aggregated catalogue of services and resources provided by Research Infrastructures (RI) and Core Facilities (CF)** across Europe. It is a bottom-up initiative that is meant to be populated and run by RI and CF service providers at European, national, regional and institutional levels. CatRIS will be complementary to and interoperable with the EOSC catalogue.



The **active engagement of the whole RI community**, at all levels (European, national, regional and local/institutional), is critical for the success of CatRIS.

CatRIS is being developed by an international consortium led by ESF and funded under the H2020 Programme. For more information and to get involved **visit our website catris.eu**.

Project Coordinator : Ana Helman | ahelman@esf.org

www.linkedin.com/company/catris

twitter.com/project_catris

